

# NORTHWEST GREEN HOME TOUR

# 2026 Tour Guide

With Bonus Remote Site Locations on Sunday April 26

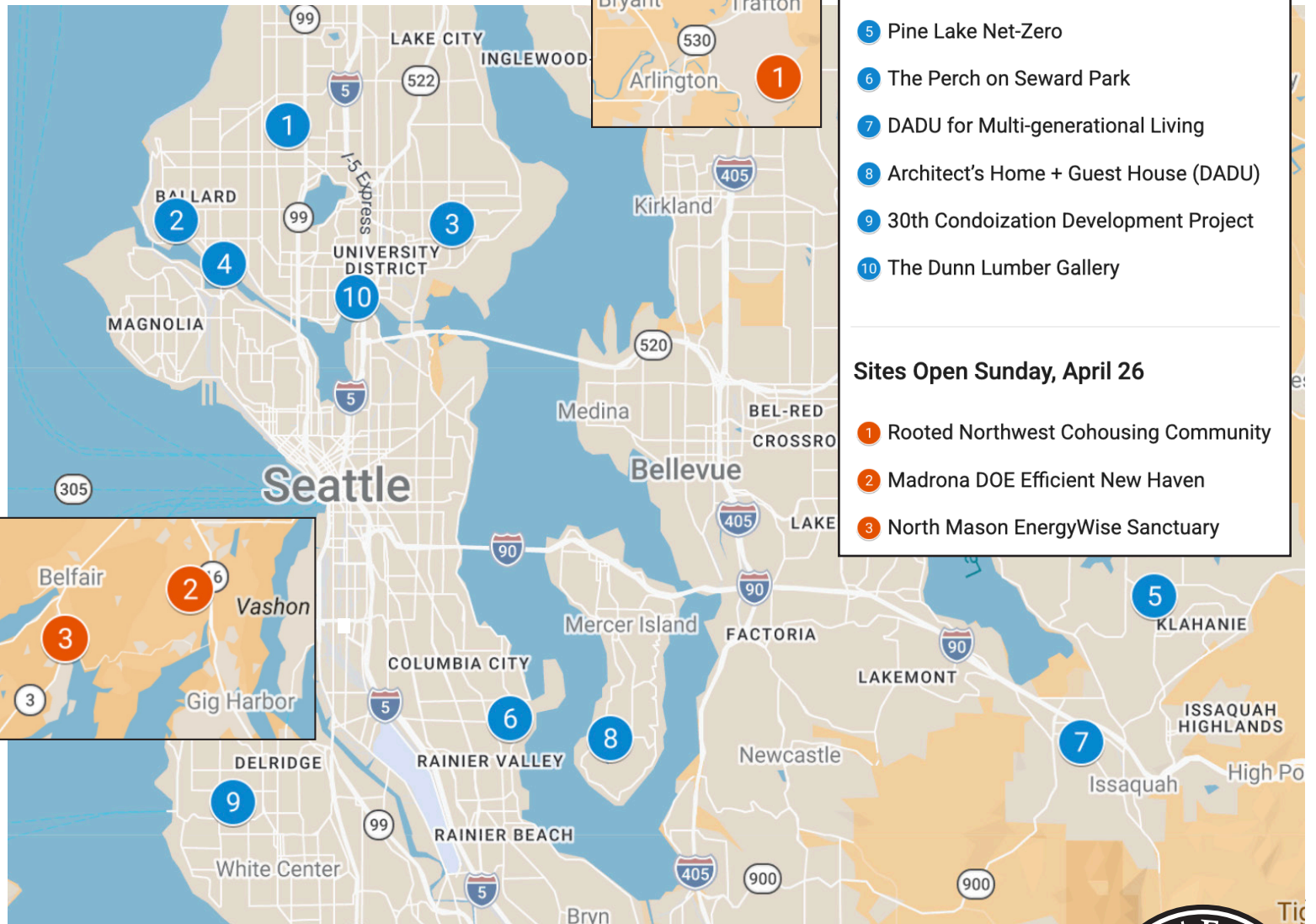


Sat., April 25, 2026  
[nwgreenhometour.org](http://nwgreenhometour.org)



Scan here to get tickets and to view more details for each site.

Addresses and site descriptions can be found on the back.



### Sites Open Saturday, April 25

- 1 Greenwood DIY: Adapting a 1928 Home
- 2 28th Street Cottage
- 3 Bryant Deep Energy Retrofit
- 4 PCC Markets - Ballard
- 5 Pine Lake Net-Zero
- 6 The Perch on Seward Park
- 7 DADU for Multi-generational Living
- 8 Architect's Home + Guest House (DADU)
- 9 30th Condoization Development Project
- 10 The Dunn Lumber Gallery

### Sites Open Sunday, April 26

- 1 Rooted Northwest Cohousing Community
- 2 Madrona DOE Efficient New Haven
- 3 North Mason EnergyWise Sanctuary

2026 PROUD SPONSORS:



11:00-5:00pm daily | [nwgreenhometour.org](http://nwgreenhometour.org)

## Greater Seattle Site Locations



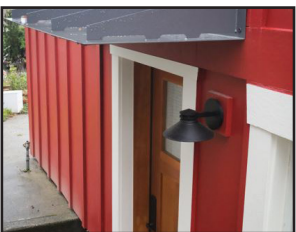
**#1 - Greenwood DIY: Adapting a 1928 Home + DADU live-work-play architecture & design**

9231 Evanston Ave N, Seattle, WA 98103  
A 1928 home, a long-range phased DIY vision, and real results. Tour the completed phases, hear what's planned next, and stroll through a "right plant, right place" garden designed for low-maintenance beauty.



**#2 - 28th Street Cottage**  
**Abode Builders LLC + Sandpoint Studios**

6103 28th Ave NW, Seattle, WA 98107  
The 28th Street Cottage is a thoughtfully designed sustainable home located on the western edge of Ballard.



**#3 - Bryant Deep Energy Retrofit**  
**Carlisle Classic Homes**

6007 36th Ave NE, Seattle, WA 98115  
This Bryant neighborhood home is getting ready to celebrate its 100th birthday with a full-scale deep energy retrofit.



**#4 - PCC Community Markets**  
**PCC Ballard Location**

1451 NW 46th St, Seattle, WA 98107  
PCC's Ballard location was the first "Living Building" grocery store in the world, meeting the Petal Certification, which is the world's most rigorous green building standard.



**#5 - Pine Lake Net-zero**  
**First Lamp Architects**

3542 Issaquah-Pine Lake Rd SE Sammamish, WA 98029  
A refined modern residence pursuing 5-Star Built Green certification, this home is crafted around a high-performance envelope—advanced wall assemblies, precision glazing, and an efficient heating and cooling system.



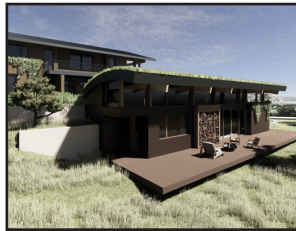
**#6 - The Perch on Seward Park**  
**Batt + Lear**

6228 51st Pl S, Seattle, WA 98118  
A tall high-performance window wall facing southeast, to drink up the view of Mt. Rainier and take advantage of the low-angle sun through the rainy months. A uniquely-shaped roof overhang shades the family from summer sun.



**#7 - DADU for Multi-generational Living**  
**Lastingnest + S.A.G.E. Designs NW**

990 Pickering Pl NW, Issaquah, WA 98027  
This property, with a newly built DADU designed for the homeowners' extended family, showcases multi-generational living while maintaining independent spaces.



**#8 - Architect's Home + Guest House**  
**Suzanne Zahr, Inc. + SZ Build, Inc.**

8110 SE 70th St, Mercer Island, WA 98040  
Beautiful, durable, and sustainable, these buildings are designed to comfortably nestle into the sloped site, creating unique indoor / outdoor spaces throughout.



**#9 - 30th Condoization Project**  
**Mighty House Construction + ming architecture and design + Madison Avenue Realty**

8627 30th Ave SW, Seattle, WA 98126  
A behind the walls looks at the sustainable features of building 3 dwellings on a single-family lot in the middle of the city.



**#10 - The Dunn Lumber Gallery**  
**Dunn Lumber**

3800 Latona Ave NE, Seattle, WA 98105  
The Dunn Lumber Gallery is a modern showroom for windows, doors, and cabinetry. Located in Seattle's new Northlake Commons building—the city's first and only mass timber commercial building—it offers a curated space open to homeowners, contractors, and architects.

## Bonus Remote Sites | Sun, April 26, 2026 | 11:00am-5:00pm



**#1 - Rooted Northwest Cohousing Community (Arlington)**

**Rooted NW Cohousing + The Farms at Rooted NW + Community Supported Agriculture**  
13410 228th St NE, Arlington, WA 98223

Rooted Northwest is a beautiful, energy-efficient, privately-owned village of homes nestled on shared land of over 200 acres.



**#2 - Madrona DOE Efficient New Haven (South Kitsap County)**

**Pioneer Builders, Inc.**  
12228 Madrona Road SW, Port Orchard, WA 98367

This is Pioneer Builders' first DOE Efficient New Home. Triple pane windows Innotch Windows and Doors, vrf heating/cooling, ERV with wall control, Swidget device connections, ecm recirculation pump, unvented crawl space.



**#3 - The Olympic Energywise Sanctuary (North Mason County)**

**Pioneer Builders, Inc.**  
130 E. Olympic Court, Allyn, WA 98524

Energy Star certified with triple pane Innotch Windows and Doors, Mitsubishi HyperHeat heat pump, Taco Comfort efficient water recirculation pump with smart plug, fully insulated underslab.

**NORTHWEST GREEN HOME TOUR**

SCAN HERE TO GET TICKETS & SITE DETAILS.

Presented by The Northwest EcoBuilding Guild is a 501(c)(3) community of builders, designers, suppliers, homeowners, and partners concerned with ecological building in the Pacific Northwest.

SCAN HERE TO MAKE A DONATION TO THE NW GREEN HOME TOUR!